

Graduate Program of Biotechnology and Pharmaceutical Industries

Contact Information

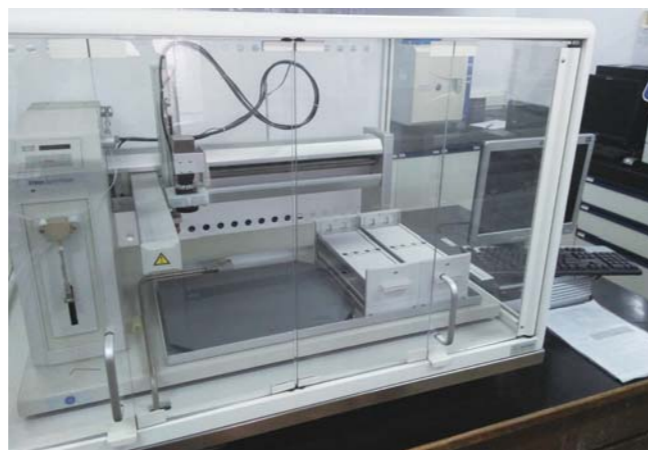
Contact: Ms. WONG
Tel: +886-2-7734-6291
Email: lifes@deps.ntnu.edu.tw
Website: <http://www.biol.ntnu.edu.tw/en/>

Introduction

- Course curriculum include topics in biotechnology, pharmaceutical industries, and intellectual property.
- Instruct students in developing the skills of creativity, communication, critical thinking, cooperation, and management through courses of biotechnology and pharmaceutical industries.
- We offer adaptive teaching for different professional backgrounds.

Instructional Objectives

- Provide training for students looking to work as professional managers within the pharmaceutical, medical appliances, or bio-technology industry.
- Instruct students in developing the skills of creativity, communication, critical thinking, cooperation, and management.



Degree Requirements

Required	Elective	Total Graduate Credits for Graduation
12	12	24

Required courses include: Seminar(2), Studies in Biotech-Pharmaceutical Industry(2), Biotech Products Development and Intellectual Property Management(3), Research and Design Management in the Bio-industry(3).

Elective courses include: Topics on Biotech-Pharmaceutical Industrial(3), Internship in Domestic Biotech-Pharmaceutical Industry(3), Pharmaceutical Industry Aspects on Chinese and Western Medicine(3), Internship in Overseas Biotech-Pharmaceutical Industry(3), Topics in Biotechnology(3), Protein and Enzyme Chemistry(2), Concept and Experimental Learning of Plant Factory(2), Translational Medicine(2).

Feature of the Curriculum

- Internship in Domestic Biotech-Pharmaceutical Industry.
- Internship in Overseas Biotech-Pharmaceutical Industry.
- We offer adaptive teaching for different professional backgrounds. Students can choose different elective courses according to their interests.

Career Prospects

- Manager within pharmaceutical industry.
- Management of pharmaceutical intellectual property rights in government or hospitals.

